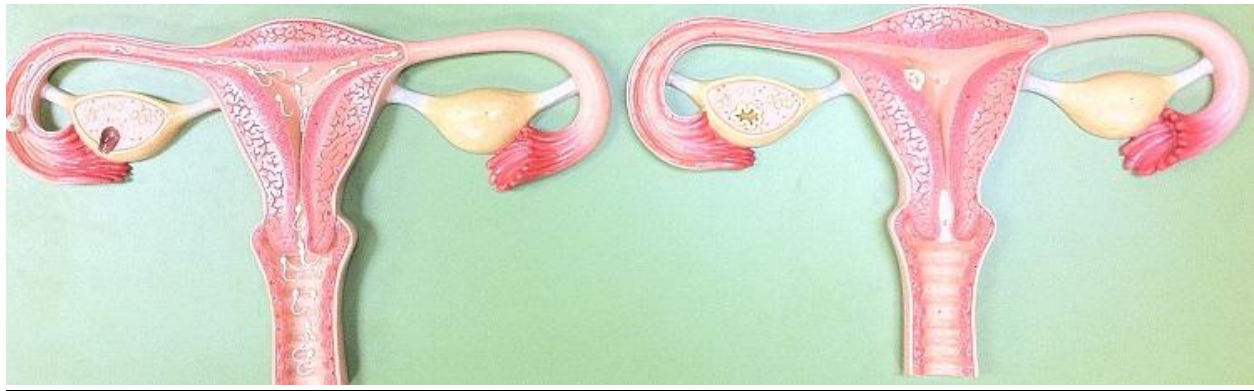


Female Fertilization Model KEY



1. Vagina
3. Cervix
4. Endometrium
5. Lumen of Uterus
6. Uterine Tube (a.k.a. Fallopian Tube)
7. Ovary
9. Vesicular Follicle (a.k.a. Graafian Follicle) on LEFT, Corpus Luteum on RIGHT
10. Ovum on LEFT, Implanted Blastocyst on RIGHT
11. Fimbriae