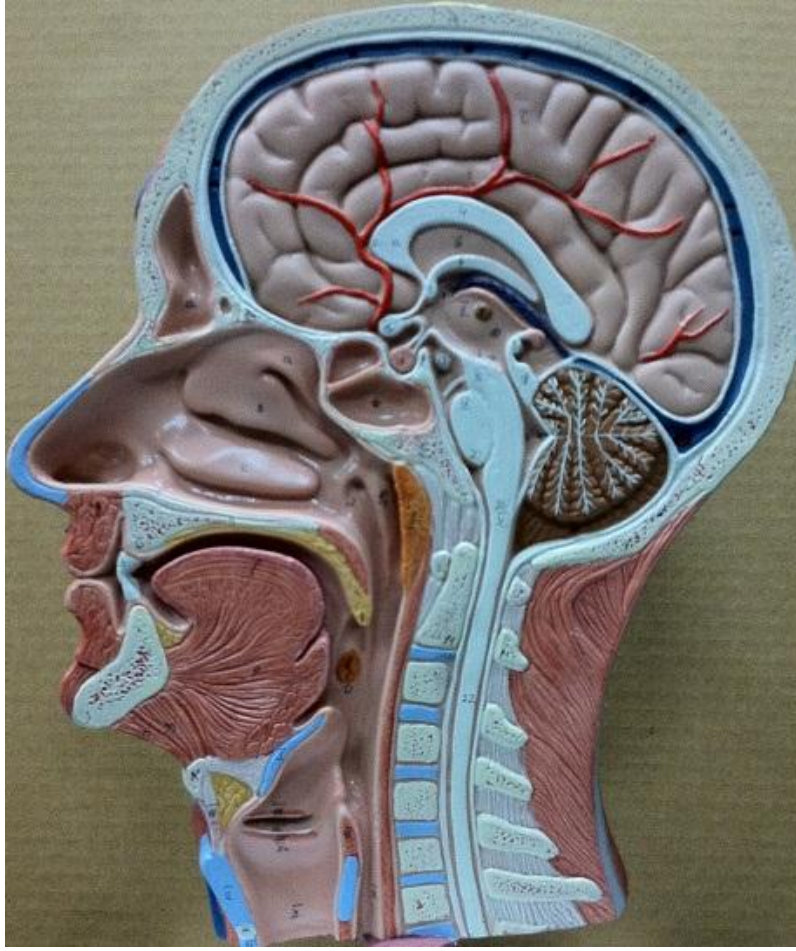


Half-Head Model Key: Nervous System



- I. Cerebrum
1. Superior Sagittal Sinus
3. Cerebellum, entire (white "trees" are arbor vitae)
4. Corpus Callosum
5. Septum Pellucidum
6. Fornix
7. Anterior Commissure
8. Interthalamic Adhesion
- 10, II. Thalamus
11. Choroid Plexus
12. Cerebral Aqueduct (a.k.a. Aqueduct of midbrain)
13. Fourth Ventricle
14. Pineal Gland (a.k.a. Pineal body)
15. Optic Chiasm
16. Pituitary Gland (stalk is the infundibulum)
17. Mammillary Body
18. Corpora Quadrigemina
20. Pons
21. Medulla Oblongata
22. Spinal Cord