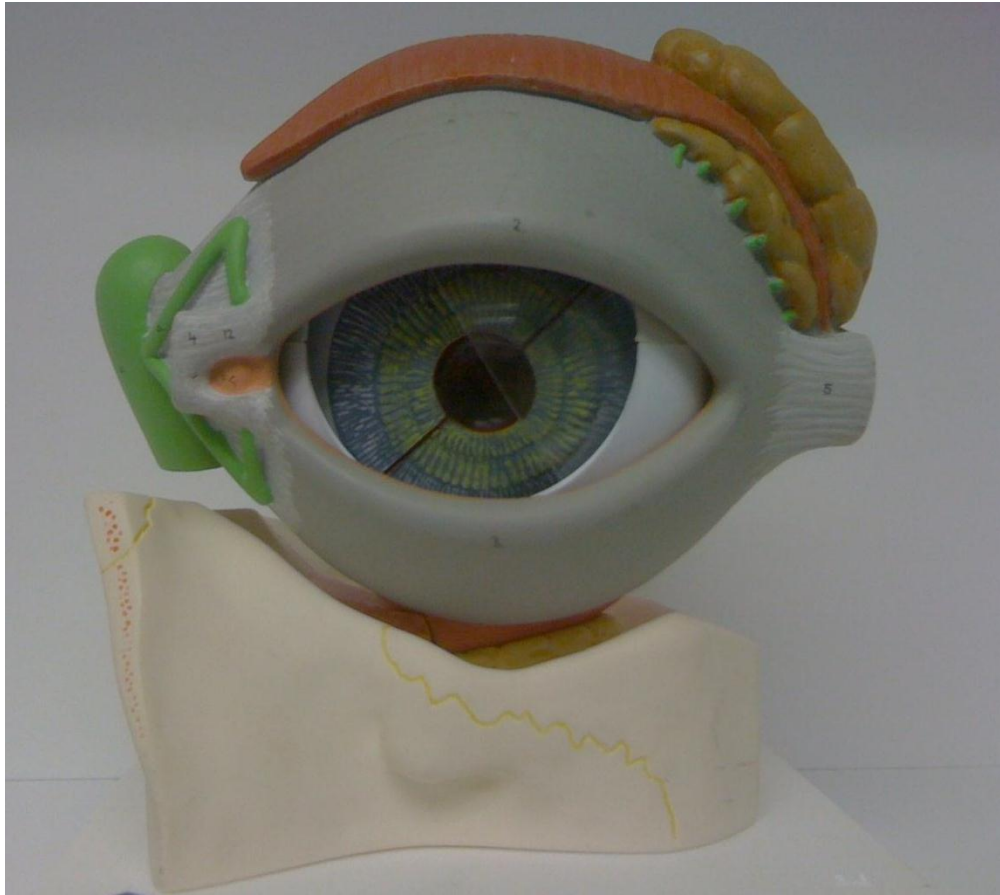


The Human Eye with eyelid and lacrimal organs: KEY



Eye Muscles

- I Superior rectus m
- II Inferior rectus m
- III Medial rectus m
- IV Lateral rectus m
- VI Inferior oblique m

Eyelid

- 1. Superior muscle of eye
- 2. Superior tarsus palpebrarum
- 3. Inferior tarsus palpebrarum
- 7. Palpebrae conjunctiva
- 9. Lacrimal gland
- 9c. Ducts of lacrimal gland
- 10. lacrimal sac
- 11a. Superior lacrimal duct
- 11b. Inferior lacrimal duct

11c. Lacrimal caruncle

Interior of eye

- 1. Cornea
- 2. Sclera
- 3. Iris with pupil
- 4. Ciliary muscle
- 9. Retina
- 13. Yellow spot and fovea centralis
- 14. Blind spot
- 15. Lens
- 16. Vitreous humor