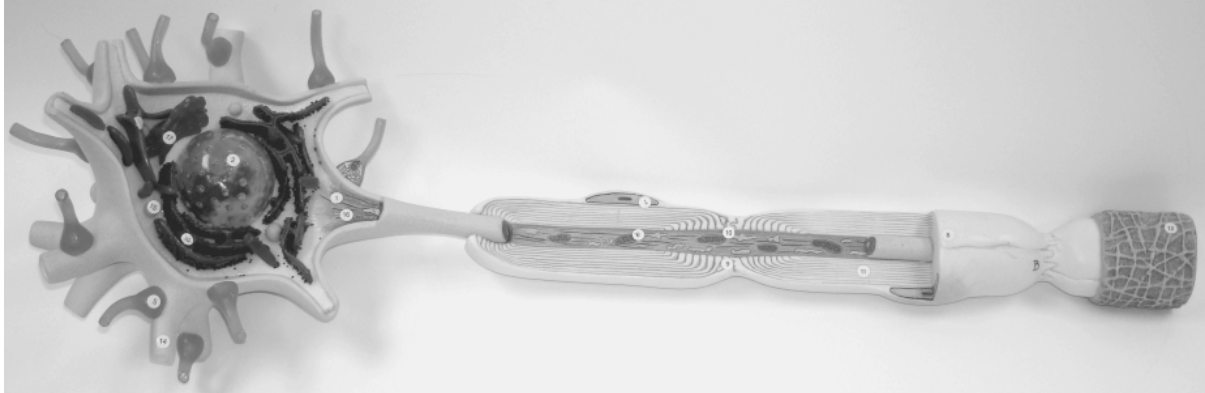


Neuron Model Key

This sheet tells you what you need to be able to identify on this model – check the “to know” sheet for anything else you may need to know about this topic.



You are **done** with this model when you can identify **all** of the following structures:

(this model shows a postsynaptic neuron with numerous presynaptic synaptic terminals that synapse to this neuron – one of the synaptic terminals is sectioned; also observe the enlarged synaptic terminal model in lab)

- 6 axon
- 16 axon hillock
- cell body (= cyton = soma)
- 14 dendrites
- 12 endoneurium/
- 11 myelin sheath
- 8 neurilemma
- (Sheath of Schwann)
- 3 Nissl bodies (= chromatophilic substance)
- 9 node of Ranvier (= myelin sheath gap)
- 7 Nucleus of Schwann cell
- (forms myelinated internodes)
- 5 synapse
- synaptic cleft (gap b/t synapse and dendrite)
- synaptic terminals of presynaptic neurons
- (= terminal boutons = synaptic knobs)
- synaptic vesicles in cut-away of synapse

10 mitochondrion



Hint: look at the end of the axon for a transverse view of the axon, myelin sheath, neurilemma and endoneurium!