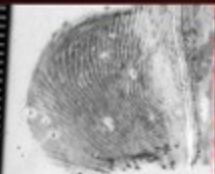




## RON SMITH & ASSOCIATES, INC.

### COMPLEX LATENT PRINT EXAMINATION



#### Course Description

This course is designed to assist the examiner in understanding the complexity of friction ridge detail. Students will learn valuable searching smart skills that can be applied for all areas of friction ridge examination. An overview of the detail of friction ridge skin of the fingers and palms and then will progress into the areas of tonal reversal, mirror prints, overlapping prints, distorted prints, etc. Even with the most challenging friction ridge detail, there are usually visual clues that can be used in the analysis and comparison process. Step by step instructions and practical exercises in the ACE-V Methodology will give the students more insight to assist them in properly analyzing these complex prints.

Not all friction ridge detail left behind at crime scenes are from the hand area. Did you ever consider that it could have come from friction ridge detail found on the foot? Did you know that our feet have friction ridge detail that has unique features? A presentation will be given to discuss the unique friction ridge detail found on our feet.

Part of the scientific process is documenting the analysis based on observed "objective" data. Students will be presented the SWGFAST Documenting the ACE-V Standard and then will be given a practical exercise containing various latent prints to document their analysis.

How do Frye, Daubert and Kumho affect you? What are some of the questions you can expect at a "Daubert Hearing?" What resources do you have available to assist you in responding to a Plaza style challenge to the science of fingerprints? What is a Plaza challenge? What resources do you have available for your personal development in the science? What resources do you have at your disposal in establishing guidelines for your latent print unit? All these questions and more will be answered during this intense week of presentations, comparison exercises, conducted both individually and as a group (bring those magnifiers), and a "hands on" application of much of the material presented.

What has happened since the National Academy of Science (NAS) in their released report? We will be discussing the impact this report has had and continues to have on examiners.

#### Instruction Includes

Students will receive instructions on:

- Searching Smart techniques
- Palm Print location/orientation
- Analyzing complex prints such as tonal reversed, image reversed, overlay, pressure distortion issues, etc.)
- Footprint Ridge Detail
- Daubert issues
- SWGFAST ACE-V Methodology Standard
- SWGFAST Documentation Standard



**Class Instructor:**  
**Debbie Benningfield**  
**CLPE**



#### Course Logistics

**When:**

April 14-18, 2025

**Class Times:**

08:00 am - 05:00 pm

**Where:**

Florida Public Safety Institute  
Tallahassee State College  
75 College Drive  
Tallahassee, FL 32333

**Tuition:**

\$650.00

***This course approved for  
I.A.I. Certification & Re-certification***

#### Local Contact

Shawn Yao

Director of Forensics

Tallahassee Police Department

850-891-4209

Robert.Yao@talgov.com