



August 18, 2014

MEMORANDUM

TO: District Board of Trustees
FROM: Jim Murdaugh, President
SUBJECT: Gadsden Center

Item Description

This item provides an update to the Board of Trustees on the status of planning for the new Gadsden Center.

Overview and Background

At the June 16, 2014 meeting, the Board accepted the donation of a 1.42 acre parcel of land located on Pat Thomas Parkway in Quincy, Florida. TCC staff proceeded with the development of an architectural program and preliminary plans for the new facility. The proposed building will have a floor area of approximately 4,784 square feet (air conditioned) with an adjacent 2,500 square foot covered workshop for vocational education programs. The budget to complete the project will be approximately \$1.2 million, and the project duration will be approximately one year.

Past Actions by the Board

The Board approved acceptance of the parcel from the City of Quincy at the June 16, 2014 meeting.

Funding/Financial Implications

Funding for the project will be provided from Fund Three - Auxiliary Services reserves.

Staff Resource

Teresa Smith

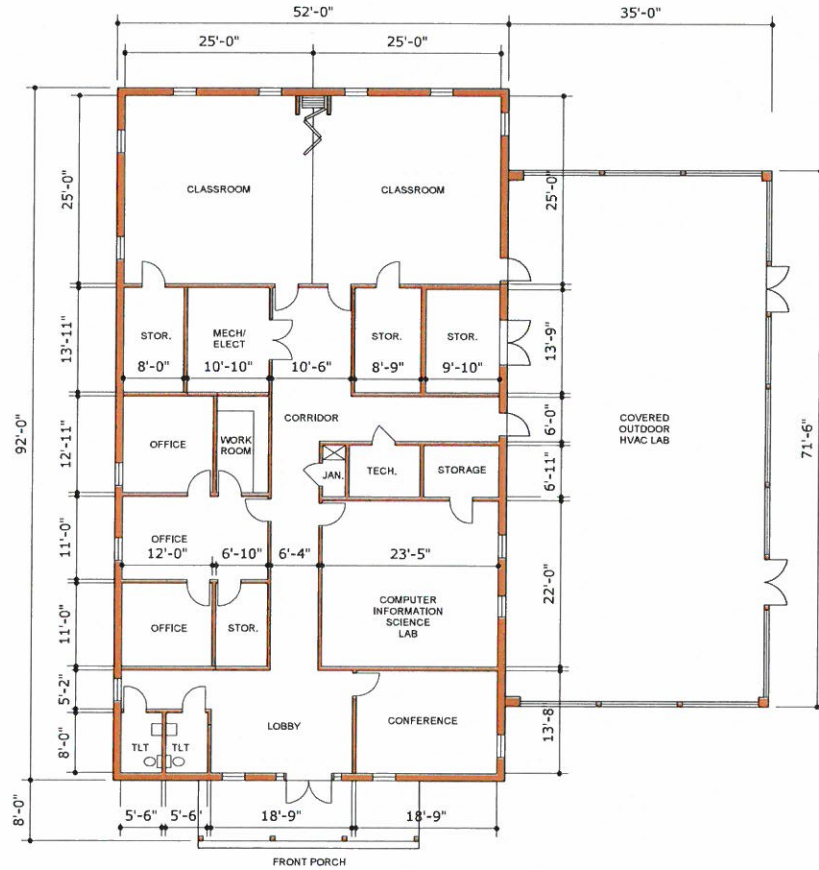
Recommended Action

Board approval is not required at this time. The item is provided as an informational update to the Board.



DAY ARCHITECTS, INC.
1117 Aspen Park Drive, Ft. Lauderdale, FL 33304
TEL: (954) 561-1111 FAX: (954) 561-1122
AA-CES-001

CONCEPTUAL DESIGN



FIRST FLOOR PLAN - TCC
SCALE: 1/16" = 1'-0"
4,784 GSF CONDITIONED SPACE
2,500 GSF UNCONDITIONED SPACE



Gadsden Center
Tallahassee Community College
Quincy, Florida

NOT FOR CONSTRUCTION

Drawing Seal
Revisions:

Drawn By: JDB
Checked By:

Date: 07.30.14

Drawing Title:

FLOOR PLAN

Drawing No.

A-100



DAG ARCHITECTS, INC.
 1111 South Wood Street, Suite 1010
 Tallahassee, Florida 32304-1111
 TEL: 904/224-1111 FAX: 904/224-1111
 WWW.DAGARCHITECTS.COM

SCHEMATIC DESIGN

Gadsden Center
 Tallahassee Community College
 Quincy, Florida

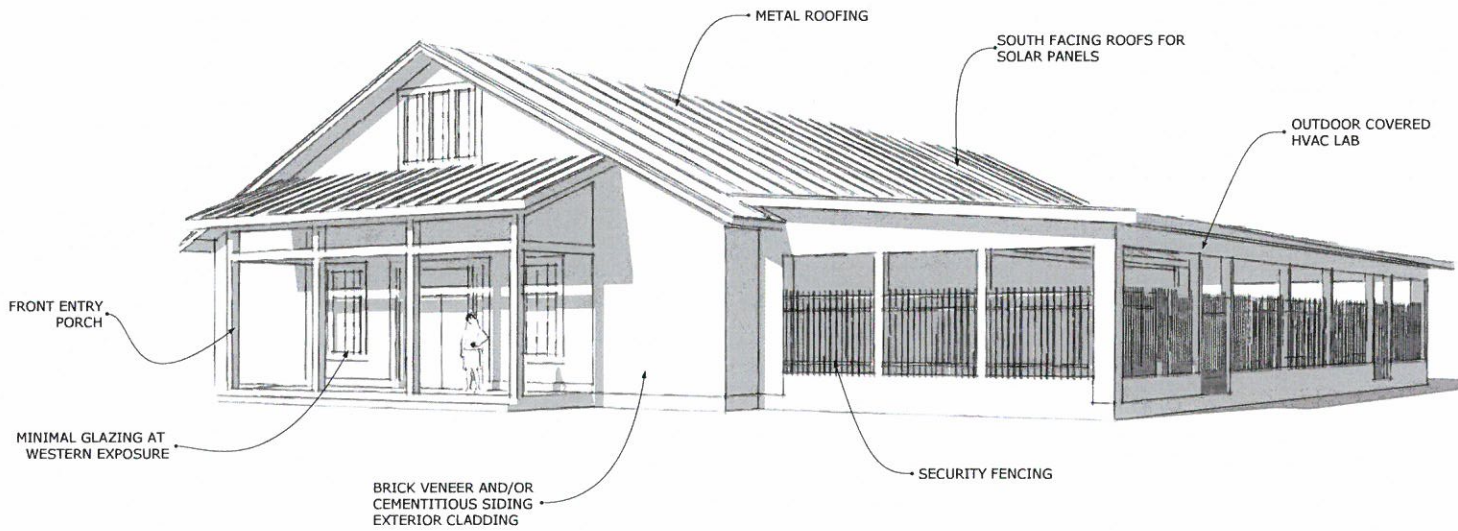
NOT FOR CONSTRUCTION

Drawing Seal
 Revisions:

Drawn By:
 Checked By:
 Date: 07.30.14

Drawing Title:
 ONE STORY VIGNETTE

Drawing No.
 A-102



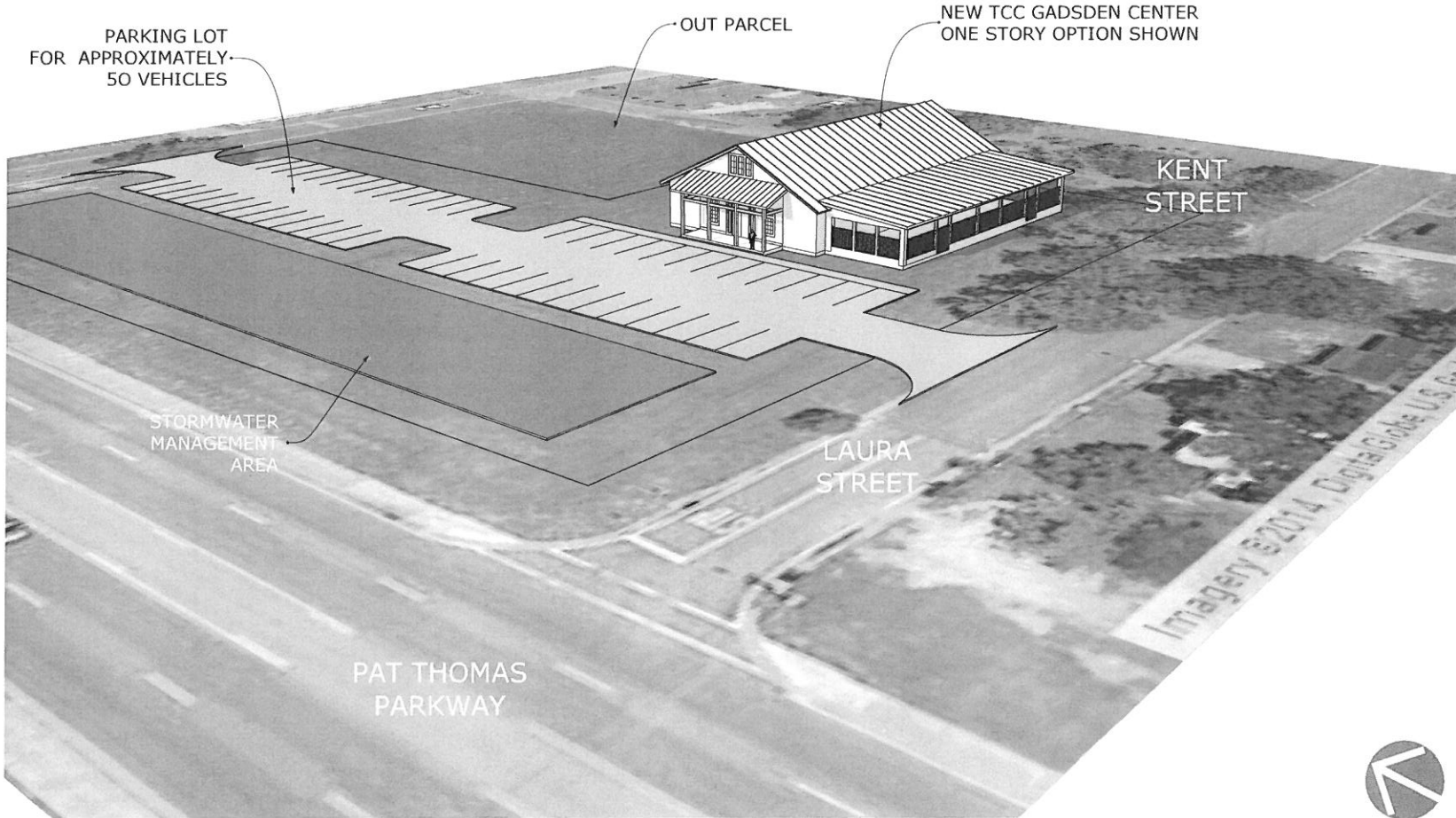
ONE STORY VIGNETTE - FROM THE SOUTHWEST - TCC ONLY



DAG ARCHITECTURE, INC.
1111 Avenue M, Suite 101
Tallahassee, Florida 32304-4478
AA-CW-11

THIS DRAWING IS THE PROPERTY OF DAG ARCHITECTURE, INC. AND IS NOT TO BE REPRODUCED, COPIED, OR TRANSMITTED IN ANY FORM OR BY ANY MEANS, ELECTRONIC OR MECHANICAL, WITHOUT THE WRITTEN PERMISSION OF DAG ARCHITECTURE, INC. ANY UNAUTHORIZED USE OF THIS DRAWING IS STRICTLY PROHIBITED.

SCHEMATIC DESIGN



Lincoln HS JROTC Building
 Leon County Schools
 Tallahassee, Florida

NOT FOR CONSTRUCTION

Drawing Seal
Revisions:

Drawn By: _____
 Checked By: _____
 Date: 07.30.14
 Drawing Title:
SITE STUDY
 Drawing No.



S-100